



Sheffield Domestic and Sexual Violence and Abuse Strategy 2014-17

The Sheffield Vision

In Sheffield we will work together to:

- **Provide** effective services to those in need
- **Protect** the most vulnerable and those at highest risk
- **Prevent** domestic and sexual abuse by sending out clear messages that abuse is not acceptable in our city

Domestic and Sexual Abuse will not be tolerated in Sheffield and we believe that every individual and all agencies have a role to play in spreading this message. No one should have to live in fear of violence and abuse. No one should think it acceptable to perpetrate violence against anyone. No child should grow up in a home where violence is an everyday occurrence.

Sheffield will continue to build on the successful work of previous years in ensuring good quality, effective services are available to all victims of domestic and sexual abuse and violence in the city at the point of need. In this difficult economic climate we will work with providers to ensure that services are flexible, responsive and get it 'right first time'. These services will continue to be designed so that they are accessible to people across Sheffield's diverse communities.

Our overall aim is to get the balance right between providing services for people at high risk of serious harm or even fatal injury, and services that can offer support at an early stage (to people assessed as being at medium and standard risk of serious harm) to prevent a situation becoming worse. For example agencies in the city have been working together since 2007 in Multi Agency Risk Assessment Conferences (MARACs) to target support at people at the greatest risk of serious harm and this essential process is valued and will be maintained. However it is also vital that people affected by domestic and sexual violence and abuse are offered information about the options for keeping themselves and their families safe as early as possible.

People who have experienced domestic and sexual abuse and violence also need to be offered support to recover from the medium and long term impact. We will continue to ensure that structured group work programmes and therapeutic interventions (e.g. counselling services) are available, consider how such services link up and what gaps there may be.

We will work with local agencies so that they have the knowledge and skills to identify people affected by domestic and sexual abuse and violence, including children and young people, and are able to respond and refer appropriately. Unfortunately, people in the UK die or are seriously harmed as a result of domestic or sexual violence and Sheffield is no exception. We will work together to learn the lessons for agencies in these circumstances and make the changes we can to help prevent such deaths or 'near misses' in the future.

Getting the message out that perpetrating domestic and sexual violence and abuse is not an acceptable way to behave and will not be tolerated is another important factor in preventing abuse in future. There are a range of initiatives currently being developed with schools and young people's groups, as well as programmes delivered by partners such as South Yorkshire Police and South Yorkshire Fire and Rescue Service which provide community safety messages to children and young people. Such programmes should be welcomed but coordination of key messages is also important. There is also work to be done in building links with local communities including Faith organisations and other local groups who may be well placed to offer initial support and signposting.

Underpinning all of this work will be transparent governance structures including regular opportunities for stakeholder and service user consultation and feedback. Agencies with responsibility for commissioning will also continue to do so jointly so that available resources have the greatest impact.

Whilst recognising the government's national response to domestic and sexual abuse and violence in *The Call to End Violence Against Women and Girls Action Plan* which includes both national and local actions and the recent *NICE public health guidance 50 – Domestic violence and abuse: how health services, social care and the organisations they with can respond effectively*, this strategy aims to set out local priorities in this area for the next three years and to outline the planned responses to the gaps we are aware of.

There will be many challenges ahead in this time of austerity and reducing public sector budgets, however Sheffield, in accordance with the national action plan, wants to ensure that at a minimum *'it is important that continued support for victims is available, particularly in an economic climate which requires us to spend less and work more efficiently.'*¹

The strategy includes in its scope:

- Domestic violence and abuse
- Sexual violence and abuse
- Female and male victims
- The response to perpetrators
- Children and young people affected by domestic and sexual and violence abuse as both victims, witnesses and perpetrators, including 16 and 17 year olds in abusive relationships

Background – Where we have come from

Domestic and Sexual Violence and Abuse services (women's refuges, community outreach services, rape and sexual abuse support services) were initially established in the city from the 1970s onwards. These services were led by the women's voluntary sector in Sheffield which was at the forefront of strategic and service development in relation to domestic abuse for many years. Much progress has been made in the last couple of decades in recognising the devastating impact domestic and sexual abuse has on people's lives, identifying the victims and developing services to offer support.

By 2007 multi-agency working in response to domestic abuse was developing rapidly with the introduction of the Specialist Domestic Violence Court Initiative and Multi-Agency Risk Assessment Conferences (MARAC). In 2010 a city wide helpline was established and co-located with the Independent Domestic Violence Advocacy Service, Police Domestic Violence Officers and the Children's Social Care Joint Investigation Team, and a new citywide outreach service was created.

¹ Call to End Violence Against Women And Girls Action Plan, HM Government March 2011

Since 2010 new services have continued to be developed including a Domestic Abuse Helpline for the city, and greater emphasis is now placed on ensuring services are of high quality, that the support received makes a difference and that people are able to recover from abuse and move on with their lives.

In 2012 a 'Strategic Review of Domestic Abuse Structures and Services' (see <http://sheffielddact.org.uk/domestic-abuse/resources/local-strategies/>) was commissioned by Sheffield City Council and undertaken by Jo Daykin-Goodall, Director of Substance Abuse Strategy for the Primary Care Trust. Following the move of Public Health into the local authority, the Drug and Alcohol / Domestic Abuse Coordination Team (DACT) became the lead for the city on strategy and commissioning in relation to domestic abuse. The DACT had fully implemented the review's recommendations by November 2013 including changes in relation to governance and commissioning structures.

The definition of domestic violence was changed in March 2013 to include young people aged 16 and 17 years old (Appendix 2), as 16-19 year-olds are now recognised as the group most likely to suffer abuse from a partner.

What we know about Domestic and Sexual Abuse and Violence in Sheffield²

It is estimated that around 16,000 adults and 12,000 children are affected by domestic or sexual abuse or violence in Sheffield every year. Women are the majority of victims – reflecting the fact that domestic and sexual violence and abuse remain gender issues in the UK.

Incidents of Domestic and Sexual Abuse and Violence remain under reported and under recorded nationally and locally. Increased reporting levels are therefore likely to demonstrate that people in the city have greater awareness of and improved confidence in, local services. In Sheffield 26% of the total recorded violent crime is as a result of domestic abuse, and from April 2012 to March 2013 10,475 incidents were reported to the police which is an increase of 1,266 incidents compared to the previous financial year. Reporting of rape reduced slightly in 2012/13 – there were 203 reports to the Police which is down by 7% on the previous year, demonstrating the low reporting rate for serious sexual offences³. Reporting of other serious sexual assaults is slightly up on the previous year at 150 (2% rise). The estimated cost to Sheffield of domestic and sexual abuse and violence each year is over £106.5 million.

In the financial year 2012/13 around 4,000 people have been in contact with support services – clearly a large gap between those reporting abuse and taking up support. In 2012/13 186 people from Sheffield used the Sexual Assault Referral Centre in Rotherham.

The number of high risk cases going to MARAC (the Multi Agency Risk Assessment Conference) were 546 in 2012/13 and projections for 2013/14 indicate that cases heard at MARAC are likely to exceed 800 during the year. This still remains lower than the 920 cases CAADA⁴ recommends for Sheffield (based on an expected level of 40 cases per 10,000 of the adult female population using police reporting rates and the likelihood of high risk victims of domestic abuse reporting to the police).

² See www.sheffielddact.org.uk/domestic-abuse/domestic-abuse-needs-analysis-2013/ for full information

³ 'Thirteen per cent of those who had been victims of serious sexual assault in since the age of 16 had reported the abuse to the police' www.ons.gov.uk/ons/dcp171778_298904.pdf

⁴ Coordinated Action Against Domestic Abuse www.caada.org.uk

The Council's Housing Solutions service is the front line for homelessness in Sheffield and in the last five years between 13-16% of their homelessness referrals were related to domestic abuse. In 2012/13 a total of 311 households were re-housed due to domestic abuse and homelessness; with 159 placed in a women's refuge and 155 in temporary supported accommodation (HIS 2012/13). 47% of households accepted for re-housing as homeless due to domestic abuse are women with children.

Domestic Abuse Prevalence, frequency of abuse and proportion accessing support by gender

A woman is the victim in 83% of all incidents reported to the police, and women equate to 95% of all accessing support and 97.5% of all cases heard at MARAC. We estimate that around 10,550 women and 6,480 men could be victims in the city in a 12 month period. It is noted however that evidence also suggests that men generally experience less incidents than women e.g. an average of 7 times per latest 12 month period compared to the female average of 20 times in the latest 12 months. Women are also twice as likely as men to be injured or killed in a domestic assault. However, we need to ensure that domestic and sexual abuse and violence services are not perceived as 'women only' (with the exception of the women's refuges) and that men who need services are aware of them and feel able to access them.

Domestic Abuse and Sheffield's Diverse Communities

Sheffield is a diverse city. The proportion of Black and Minority Ethnic (BME) people accessing community domestic abuse support services is around 30% of the total accessing support and 43% for those accessing a women's refuge. These proportions are both higher than the 18% Sheffield BME population and the 15% of reported incidents to the police that have a BME victim. However we are aware that overall figures may mask barriers to accessing support for particular communities e.g. local data shows that people from Pakistani, Indian, Chinese and Black African populations are currently less proportionally represented in support services compared to their proportion of the Sheffield population. This issue will need further exploration during the life of this strategy.

Less than 1% of those accessing support services are Lesbian Gay Bisexual or Transgender. This indicates that further outreach is needed to promote awareness that services are available to support people affected by domestic and sexual abuse and violence regardless of their ethnicity, sexuality or gender.

Domestic Abuse and People with additional vulnerabilities

We are gradually improving our local picture of people experiencing domestic abuse who have additional vulnerabilities and this raises issues that need addressing:

Safeguarding Adults - We know that the perpetrator is a spouse, partner or family member in 38% of cases but this does not seem to be reflected in referrals to local domestic abuse services.

Elderly victims of domestic abuse - less than 3.4% of those aged 65 plus access domestic abuse support services and less than 3% of police incidents include victims aged 65 years or above.

Mental health - Around a quarter of people accessing support services report a mental health problem

Disability - Less than 9% of people accessing services disclose a disability in Sheffield with less than 1% of MARAC cases having a disability recorded

Substance Misuse - The overlap between substance misuse and domestic abuse is apparent in Sheffield as in other parts of the country - 45% of reported domestic abuse incidents were alcohol related in 2012 and 3% were drug related (SY Police data).

Pregnancy - Research suggests that Domestic Abuse starts when the victim becomes pregnant in around 30% of cases, (Department of Health, 2004), and studies also suggest between 7% and 17% of pregnant women suffer domestic abuse. We need to ensure that maternity staff in Sheffield are confident in identifying and referring pregnant women.

Forced Marriage and 'Honour' Based Violence - South Yorkshire Police respond to around two reports a week where people are at risk of Forced Marriage or 'Honour' Based Violence. These are not issues that are confined to one religious group, culture or community. While the majority of cases encountered in the city involve South Asian families, this is due to the size of the South Asian population in Sheffield, rather than this being an issue specific to this community. Victims can be male although young women between the ages of 13 and 30 are most at risk.

We are working to improve the recording and data collection with regard to people accessing specialist support for these issues. The government has decided to make 'the use of violence, threats or any other form of coercion for the purpose of causing another person to enter into a marriage' a criminal offence and it is also a criminal offence to breach a Forced Marriage Prevention Order. We will work with partners to ensure that this information is disseminated to Sheffield communities when the change in law is implemented.

Female Genital Mutilation (FGM) - Female Genital Mutilation has a lifelong impact but the victims are children or young women. While FGM is a criminal offence in the UK, there has never been a prosecution which indicates the hidden nature of this form abuse. We will work together with partners to ensure that we learn more about the prevalence of this issue for Sheffield residents and ensure that appropriate preventative measures are in place.

Children and Young People

Young victims (Aged 16 to 19 years) – In Sheffield 3,000 16 to 19 year olds are likely to have been victims of Domestic Abuse in the last year and around 1,500 young people aged 16 to 19 years old are likely to have been a victim of Sexual Abuse in the last year (based on BCS, 2009/10). Anecdotal evidence has also shown that there are worryingly high levels of acceptance of abuse in teenage relationships. More work is required in Sheffield to ensure young people experiencing abuse in their relationships, or peer on peer, are appropriately identified, supported and safeguarded.

Children and young people can be directly affected by abuse and victimised themselves or they can be affected by abuse because someone in their home e.g. their mother, is a victim.

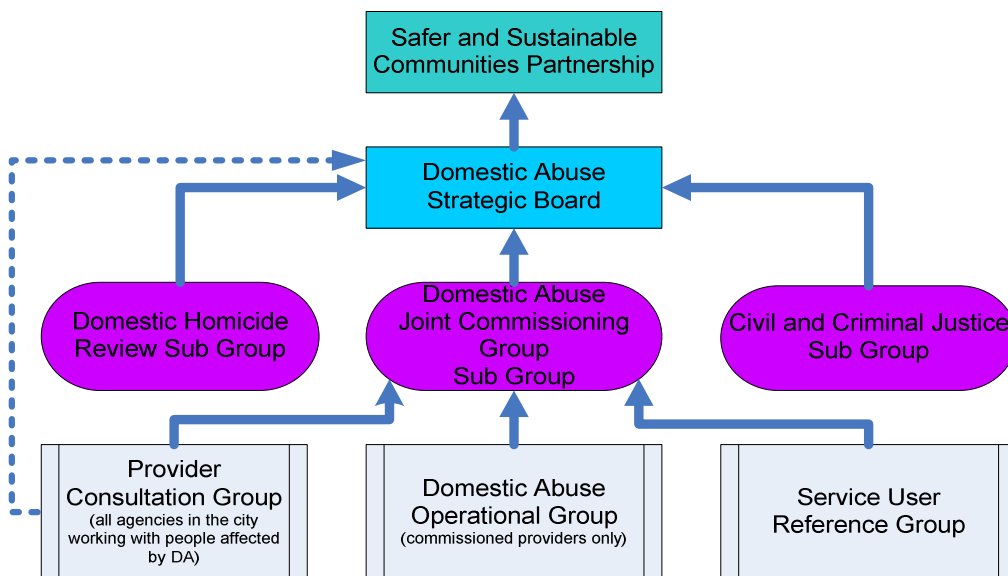
Living with abuse in the family home

Adults accessing domestic abuse support services in the city are often parents. An estimated 12,000 children and young people (aged 0-17) are likely to be living with a female domestic abuse victim in Sheffield (based on information from specialist support services and BCS).

Where we are now

Following the Strategic Review, a new governance structure (see diagram below) was implemented in 2013 with the aim of ensuring greater accountability and transparency regarding decision making and commissioning of services. Key stakeholders (voluntary and community sector services and service users) are included in the governance structure, are consulted on strategy and policy, and are invited to share expert views and highlight emerging issues for services and communities.

**Sheffield Domestic Abuse ORGANISATION STRUCTURE
DIAGRAM OF GOVERNANCE STRUCTURE**



A clear pathway (see diagram below) has been developed (intended to fit with the new Supported Accommodation Pathway when it is implemented – projected date summer 2014) and is being promoted to all agencies that may identify domestic abuse. The pathway is designed so that people experiencing domestic abuse are referred to services according to their identified risk level. The helpline is a ‘gateway’ for the public and for agencies referring people where a risk assessment has not been completed.

- A Medium and Standard Risk Service (*Domestic Abuse Helpline, Outreach Service, structured group work and support groups*)
- A High Risk Service (*Independent Domestic Violence Advocacy Service – taking the victim’s voice into the MARAC process*)
- Women’s refuges
- A young women’s refuge service specialising in sexual abuse / violence and exploitation, also providing outreach and therapeutic support
- A domestic abuse floating support service for people in need of housing related support in the community
- A rape and sexual abuse counselling service and helpline
- A service for women attempting to exit from prostitution.

The Domestic Abuse Helpline is the ‘front door’ for domestic abuse services in the city and is a key service in terms of early identification of people experiencing domestic abuse and prevention of harm. As part of recent reconfiguration of services the Helpline opening hours will be extended during 2013/14 through the use of trained volunteers from the current 33 to 50 hours a week.

The Sexual Assault Referral Centre (SARC) is currently based in Rotherham and offers forensic examination, crisis support and support with the Criminal Justice System to victims of rape and sexual assault in Sheffield. This service includes an Independent Sexual Violence Advocate (ISVA) post that covers both Sheffield and Rotherham. The SARC is being recommissioned in 2014/15 and how the ISVA service is accessed may also change as a result. Victims of sexual abuse can be directly supported by the Sheffield Rape and Sexual Abuse Counselling Centre (SRASACC) and the Young Women’s Housing Project offer support to women who experienced abuse as children.

The Council’s Housing Solutions service delivers the ‘Sanctuary Scheme’ which offers a range of security measures to domestic abuse victims that do not want to leave their home but fear the perpetrator might return and inflict further abuse. This is being reviewed as a result of learning from Domestic Homicide Reviews and Serious Incident Reviews.

The ACPO DASH risk assessment is the nationally recommended tool to ascertain risk levels regarding the adult victim and enable appropriate referral to support services. This is also used in order to refer cases to MARAC if a case is assessed as high risk using the evidence based tool.

Services for Children and Young People

Children and young people affected by domestic abuse are generally supported, including support for parents, through universal services such as health visiting, schools and children’s centres, by the Multi Agency Support Teams (MAST) based in the local authority, Social Care or specialist health services such as Child and Adolescent Mental Health. It is recognised that specialist support is necessary for children who have had traumatic experiences where this is impacting on their educational attainment, putting them at risk of becoming involved in anti-social behaviour, increasing their vulnerability to further abuse or affecting their relationships in their family or with their peers,

including their own intimate relationships. Recent research conducted by the NSPCC found that ‘children who witness domestic violence are four times more likely to turn violent themselves.’⁵

The city’s Community Youth Teams (CYT) have developed a champion model to work alongside a Prevention worker who is a specialist resource for the service working with children and young people at risk of offending as a result of domestic abuse. CYT also provides a group work programme ‘The All Together Group’ for young people at risk of offending as a result of their experience of domestic abuse. The Prevention Worker has undertaken the Young People’s Violence Advocate training programme provided by CAADA and funded by the Department for Education. The Programme supports local areas to develop a consistent local response and care pathways to young people 13 years and older, who are experiencing a range of intimate partner abuse, including domestic abuse, sexual exploitation, gangs / young people who harm others, ‘Honour’-Based Violence, forced marriage and online/cyber stalking and abuse.

The Youth Justice Service are planning to commission a service offering one to one and group work with young people who are violent to their parents. The Youth Justice Service has a cohort of frontline practitioners trained in the use of the ACPO-DASH. The Service currently delivers interventions on a one to one basis to young people cautioned or convicted of domestic abuse related offences or where this is identified as a current issue within the assessment or intervention of the Youth Justice Service. YJS is currently developing this intervention for use in group settings where assessed as appropriate. The Service is also developing a joint intervention in conjunction with the MAST parenting service to provide one to one and group work programmed interventions with young people who are violent to their parents. The Service is also due to launch the “Dig Deep” programme which aims to explore masculinity and educate young men in terms of preventing abusive relationships.

Sheffield Sexual Exploitation Service is a co-located, multi-agency service responsible for tackling child sexual exploitation in Sheffield. Referrals that are assessed as being medium-high risk are immediately allocated to staff within the service and a strategy meeting arranged, cases that are low-low/medium risk are allocated to officers in Sheffield’s Community Youth Teams that have been trained to address sexual exploitation. The service works in partnership to identify and offer support to young women at risk of sexual exploitation and abuse as a result of their involvement with gangs.

A Specialist Parenting Practitioner post, specialising in children and young people affected by domestic abuse, has been based within the Multi Agency Support Teams since September 2013. The post holder offers consultations to MAST staff where the families they are working with are affected by domestic abuse and with the commissioned domestic abuse services in order to ensure children and young people are accessing support as necessary and also, where adults (parents or carers) experiencing domestic abuse are identified by MAST that they are risk assessed and referred or signposted appropriate to specialist domestic abuse services.

The Family Common Assessment Framework (FCAF) has recently been developed and is being rolled out in Sheffield. This asks practitioners to consider domestic abuse and the need to conduct a DASH risk assessment and refer to specialist services if domestic abuse is ongoing in a family.

A range of services and initiatives are offered by voluntary and community sector providers to young people in the city with provision ranging from outreach, to educational initiatives and peer support groups. The Domestic Abuse Joint Commissioning Group has been looking at provision for children affected by domestic abuse in the city funded by internal and external funding streams. A mapping

⁵ http://www.nspcc.org.uk/news-and-views/media-centre/press-releases/2012/12-05-31-children-witnessing-family-violence/children-witnessing-family-violence_wdn89979.html

project has been completed which has enabled the Joint Commissioning Group to consider gaps and possible duplication with Council or other services.

The definition of domestic abuse changed in March 2013 to include 16 and 17 year olds both as victims and perpetrators. This has meant that the MARAC now accepts referrals from this age group.

Perpetrators

Programmes for adult perpetrators of domestic abuse are provided by South Yorkshire Probation on a court mandated basis however this will change in 2014 under the national Transforming Rehabilitation agenda – the shape of future provision is not yet clear at the time of writing. A recognised gap is that there is no commissioned voluntary programme for perpetrators at present in the city although such programmes are by no means common across the country. However, programmes such as Strength to Change in Hull have been evaluated and shown to provide a good return on investment.

Multi agency working

Multi agency processes such as the MARAC are well established in Sheffield. A review of the Sheffield MARAC was undertaken in 2013. The overall emerging themes were that MARAC is recognised in Sheffield as playing an important role in keeping victims and their children safe but that an evaluation of outcomes is necessary and capacity to manage the workload is increasingly an issue for all agencies. An action plan which aims to address these issues has been prepared by the Civil and Criminal Justice Sub Group of the Domestic Abuse Strategic Board.

A fast track Specialist Domestic Violence Court process is in place across South Yorkshire, accountable to the Local Criminal Justice Board.

A key priority continues to be to ensure that the Sheffield workforce, is able to identify people experiencing domestic abuse, are able to use the ACPO DASH tool to establish who is most at risk and that people are referred and signposted to services appropriately.

Domestic and Sexual Violence and Abuse and Local and National Priorities

The Domestic and Sexual Abuse and Violence Strategy is intended to help meet the outcomes set out in the Sheffield Corporate Plan (Standing up for Sheffield), the Joint Health and Wellbeing Strategy, the South Yorkshire Police and Crime Plan, relevant national Public Health outcomes and the new NICE Public Health Guidance on Domestic Abuse, other local strategies and the national 'Violence Against Women and Girls' Action Plan.

Examples of other linked local strategies and procedures include:

- Sheffield Sexual Health Strategy 2012-15
- Sheffield Children's and Young People's Plan 2011-14
- Sheffield Gangs Strategy 2012 -15
- Sheffield Homelessness Strategy 2010-13
- Sheffield Domestic Homicide Review guidance 2014
- Sheffield Child and Household Poverty Strategy 2011-14
- Sheffield Forced Marriage and Honour Based Violence Protocol
- Sheffield MARAC Operating Protocol and Information Sharing Protocol
- Sheffield Safeguarding Children Board Domestic Abuse Procedure

- Sheffield Hidden Harm Strategy 2013-16
- Sheffield Youth Justice Plan
- Sheffield Alcohol Strategy 2010-14

The Strategic Priorities for Sheffield – what we still need to do and why

The priorities in the table below arise from what we know needs to be ‘business as usual’ and gaps and issues identified through our work to assess local needs. We have also consulted with providers, stakeholders and service users.

How will the priorities from the strategy be implemented and held accountable?

An Action Plan will be drawn up identifying leads and timescales for the agreed priorities. The progress on the three year strategy will be co-ordinated by the DACT, and monitored quarterly by the Domestic Abuse Strategic Board, with relevant updates taken to the Joint Commissioning Group, the Civil and Criminal Justice Group, the Provider Consultation Group and the Service User Reference Group.

GOOD QUALITY SERVICES

Sheffield partners will continue to ensure the **provision of good quality services** that are responsive to local need, and get it right first time. We will do this by:-

- **Commissioning efficient and responsive services** whose staff can demonstrate understanding of the needs of users, and effectively performance managed
- **Examining the current offer with regard to therapeutic services** in order to consider possible gaps and / or better links between services.
- **Reviewing and evaluating strategies and operational processes in relation to Peer on Peer abuse and sexual violence** as part of the externally supported MsUnderstood Project
- **Consider options for recommissioning the Sanctuary Scheme**

By 2017 we want to have:

Joint commissioning based on the needs of people experiencing domestic and sexual abuse in Sheffield, including partnership work with NHS England, South Yorks. Police and the Police and Crime Commissioner in the commissioning of SARC and ISVA services. The aim is to have services that are robustly performance managed, providing an effective and efficient service for the clients, for all genders, ethnicities, ages, vulnerabilities and risk level.

An effective commissioned **refuge service** that provides good quality support and accommodation (replacing buildings no longer fit for purpose), meeting local needs and the needs of the service users.

An effective **Sanctuary Scheme** that provides safety measures in people's homes.

Actions:

- The Domestic Abuse Joint Commissioning Group will continue to oversee the commissioning cycle including the performance management of contracts, and will seek to ensure that commissioning of sexual violence services meets local needs and priorities.
- The Domestic Abuse Joint Commissioning Group is chaired by the Housing Independence Service manager responsible for commissioning the refuges. A new refuge building is due to open in Autumn 2014.
- The Domestic Abuse Joint Commissioning Group will continue to liaise with Housing Solutions regarding the future development of the Sanctuary Scheme and options for changes in delivery.

ACCESSIBLE SERVICES

We will ensure that **services in Sheffield are accessible to all**. We will do this by:

- **Ensuring services meet the needs of all victims**, including the female majority but also with a specific focus on those from known hard to reach groups in the city
- **Considering the effectiveness of pathways to support for Children and Young People affected by domestic and sexual abuse.**
- **Minimising, where possible, barriers to receiving support as a result of income** whether these are a result of poverty or due to ineligibility for welfare benefits and / or means tested provision such as legal aid
- **Using a range of media and publicity resources promote services widely and undertake specific social marketing campaigns**

<p>By 2017 we want to have: The proportion of the estimated 16,000 people experiencing domestic abuse to be accessing support services in Sheffield to have increased by 20%.</p> <p>A domestic abuse pathway that remains effective, has been updated to meet any changes to the commissioning structure, and links effectively with the new Supported Accommodation Pathway, is widely promoted and easy to use. A sexual abuse pathway in place, promoted and effective.</p> <p>A domestic abuse pathway for young people affected by domestic abuse and workforce training on this area developed and delivered.</p>	<p>Actions:</p> <ul style="list-style-type: none"> • The Domestic Abuse Coordination Team will continue to: produce materials for the general public; seek opportunities to promote services; and promote the pathway to agencies. • The Domestic Abuse Joint Commissioning Group will ensure that the Supported Accommodation Pathway links appropriately with the domestic abuse pathway when it is launched in 2014. The group will use local needs assessments to make the case for increased investment in support services as necessary. • The Domestic Abuse Strategy Manager will work with stakeholders and providers to develop a sexual abuse pathway by the end of 2015. • DACT will work with Children's Services to develop a young people's pathway and develop and deliver workforce training by the end of 2015.
<p>REDUCING RISK</p> <p>We will continue to work together to help reduce risk and improve safety. We will do this by:</p> <p>Effective multi agency working – we will ensure that the MARAC system and other multi agency processes are effective:- targeting the right people, with sufficient administrative capacity, that agencies are participating appropriately and information is shared as relevant and necessary.</p> <p>Promoting the use of the DASH risk assessment tool across agencies to ensure that people at risk of harm receive the right response first time.</p> <p>Promoting the pathway to domestic abuse services and ensuring appropriate links are made to pathways for supported accommodation; the Children's Prevention and Assessment Teams, and pathways for vulnerable adults experiencing domestic and sexual abuse. We will clarify pathways to sexual abuse / violence services.</p> <ul style="list-style-type: none"> • Ensuring the Sheffield workforce can identify and refer people experiencing domestic and sexual violence and abuse, understands the impact of abuse on people's lives via commissioned training including training at a more specialised level for agency champions and those likely to risk assess and including how best to offer support to people with additional vulnerabilities. • Policy development including in relation to people affected by domestic abuse who are excluded from benefits and services or have no recourse to public funds. • Effective implementation of changes in civil and criminal legislation e.g. DV Protection Orders and Disclosure Orders, criminalisation of Forced Marriage, and communication to relevant communities, people at risk and professionals. 	
<p>By 2017 we want to have: A MARAC that effectively supports around 920 victims per annum, with the MARAC review actions fully implemented, working effectively in partnership and responding to the actions agreed.</p> <p>The ACPO DASH risk assessment tool used by all relevant services in the city.</p>	<p>Actions:</p> <ul style="list-style-type: none"> • The Civil and Criminal Justice sub group of the Domestic Abuse Strategic Board will fully implement MARAC Review actions by end of 2014. • Continue to roll out Domestic Abuse and DASH / MARAC training to promote the pathway and ensure that the DASH is referred to in all relevant assessment processes in the city.

<p>Increased confidence of people experiencing domestic and sexual abuse to report to the Police and / or other agencies where necessary, as currently around 60% of incidents go unreported.</p> <p>Rolled out government policy changes when required and in an effective manner e.g. Domestic Violence Protection Orders, Criminalisation of Forced Marriage.</p> <p>Relevant staff in services and agencies across the city are able to identify, risk assess, refer and offer initial safety advice.</p>	<ul style="list-style-type: none"> • DACT will invite Police representatives to meet with the Service User Reference Group to discuss barriers to reporting in autumn 2014. Ensure that key agencies have training in responding to disclosures during 2014/15 (e.g. MAST). • The Domestic Abuse Provider Consultation Group will be updated as to the progress of new legislation and will provide a forum to discuss any operational issues arising. The group will also consider plans for community engagement as necessary during 2014/15 in relation to Forced Marriage criminalisation. • DACT to ensure commissioned training is accessed by relevant agency / service staff and includes safety planning.
---	---

PREVENTION

We will work together to try and **prevent abuse in the future.** We will do this by:

- **Mapping education and prevention work in the city (through the City Wide Learning Body), and promoting key messages** in relation to domestic and sexual abuse / violence and considering gaps and duplication in order to make proposals for a joined up approach.
- **Lead through good example by encouraging local agencies to sign up to the 'Domestic Violence Pledge'** committing those who have signed up to having a comprehensive corporate policy to support staff experiencing domestic violence and abuse.
- **Developing effective responses to perpetrators** – developing a programme for young people using violence against parents and in their relationships (CYT and Youth Justice Service); consider options for developing a voluntary programme for adults. Ensure good partnership working with the new provider of the Building Better Relationships programme.
- **Considering options for targeting serial perpetrators** through joint work between Criminal Justice Agencies.
- **Female Genital Mutilation** - We will work together with partners to ensure that we learn more about the prevalence of this issue for Sheffield residents and ensure that appropriate preventative measures are in place.
- **Continuing to work in partnership to help alleviate the social conditions that can trigger domestic abuse** including poverty and substance abuse

By 2017 we want to have:

Effective responses to perpetrators and young people who harm in place, including a process for identifying and responding to serial perpetrators.

Clear, agreed, public awareness messages, promoted using current and relevant forms of communication.

To have agreed key messages to promote in relation **to education on sexual and domestic abuse** and have clear prevention framework in place, with no duplication.

A **Female Genital Mutilation** prevention framework in place.

- Actions:**
- The Civil and Criminal Justice Sub Group will work with South Yorkshire Police and Probation to develop effective responses to serial perpetrators by 2015. Make the case for investment in a voluntary perpetrator programme for adults by 2016.
 - The DACT will continue to produce materials for the general public, work with local news media to promote key messages and maintain an up to date service user focussed website.
 - The DACT will map the education and prevention work undertaken in the city by 2015 and have developed a clear prevention framework and key messages with partners by 2016.

<p>We want to commit to the Domestic Violence Pledge and assist organisations who sign up to introduce policy to support employees experiencing and disclosing Domestic or Sexual Abuse, and promote the support pathway.</p>	<ul style="list-style-type: none"> • The DACT will work with colleagues in Safeguarding Children and via the Provider Consultation Group to develop a prevention framework for Female Genital Mutilation for the city by 2017. • Key statutory agencies will be approached by the DACT regarding the Domestic Violence Pledge during 2014/5. • The DACT will continue to ensure that the impact of domestic and sexual abuse is acknowledged and addressed in policy and strategy considering health and social conditions in the city
<p>GOOD GOVERNANCE</p> <p>Our work will be underpinned by Good Governance and Accountability. We will:</p> <ul style="list-style-type: none"> • Embed the new governance structure – we will ensure consultation is undertaken with all stakeholders including service users on local developments • Continue to increase the reliability of submitted data to support future domestic abuse needs assessment work and allow effective performance management. <p>Continue to develop joint commissioning. We will share local information and priorities to inform the commissioning of SARC and ISVA services. We will give consideration to the needs of people in the city experiencing sexual abuse and violence, and the needs of children and young people affected by domestic and sexual abuse and violence.</p> <p>Ensure systems are in place to conduct good quality DHRs and Serious Incident Reviews when necessary and overseeing implementation of DHR action plans and dissemination of learning.</p>	
<p>By 2017 we want to have:</p> <p>A governance structure that has been reviewed, is fit for purpose and remains effective.</p> <p>A Domestic Homicide Review process that continues to meet the government's mandate, with effective implementation of actions and dissemination of learning.</p> <p>The domestic abuse minimum dataset fully implemented, and providing robust and meaningful client data to support needs assessments and allow effective performance management.</p>	<p>Actions:</p> <ul style="list-style-type: none"> • DACT will review the governance structure during 2014 and make any changes as necessary. • The DHR sub group will respond to any changes to national Domestic Homicide review guidance or national lessons learned. • DACT will ensure compliance with minimum dataset through contract management of providers and through liaison with the Housing Independence Service regarding housing related support services.

Page 21

This page is intentionally left blank